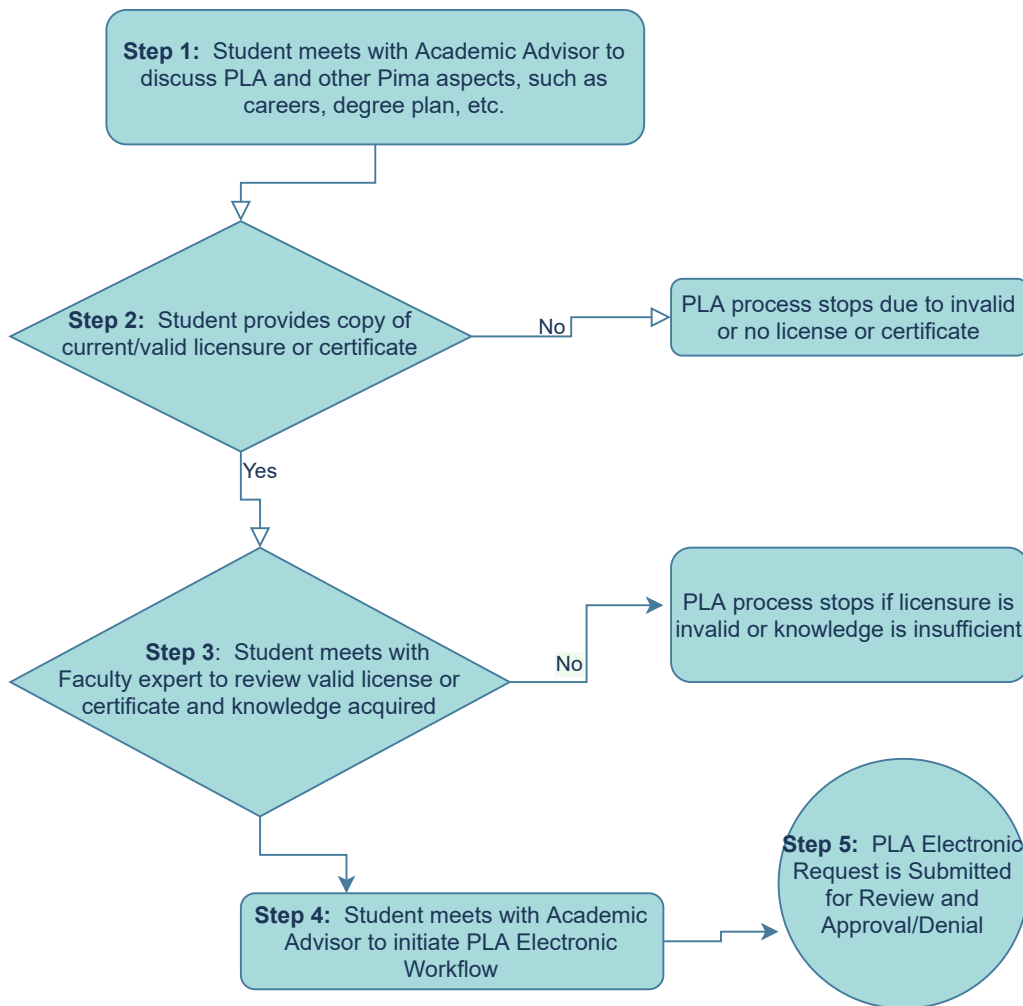


Business/Industry Licensure and Certification



Business/Industry License or Certificate

Step 1: Student meets with Academic Advisor regarding career interests, including PLA and other Pima aspects

Step 2: Student provides copy of current licensure or certification

Step 3: Student meets with Faculty expert to discuss knowledge and learning acquired and licensure/certification

Step 4: If student wishes to pursue PLA for Business/Industry licensure or certification, meet with Academic Advisor to initiate PLA Electronic Workflow (i.e. PLA Request)

Step 5: PLA Electronic Workflow is initiated with Academic Advisor Submission and Approval/Denial, Student Review and Approval/Denial, Discipline Coordinator Review (i.e. faculty expert) and Approval/Denial, Dean Review and Approval/Denial, and electronic submission to the Registrar's Office for transcription of credit.