































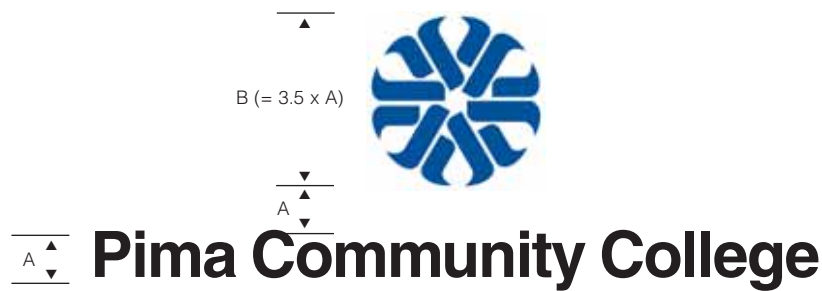






**Use**

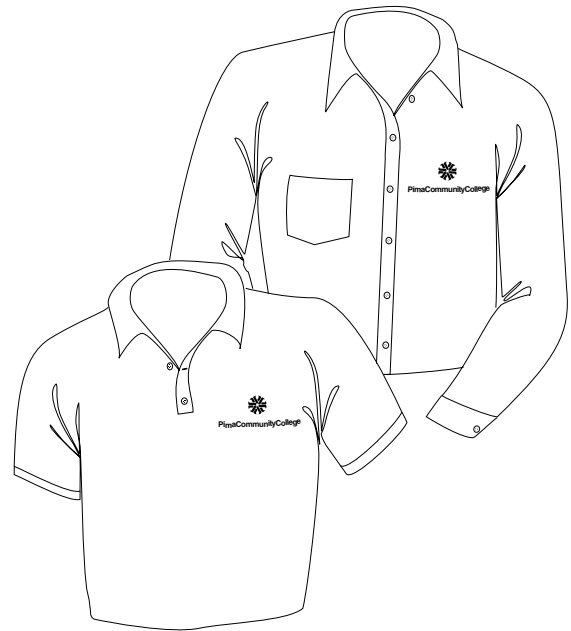
The use of the College signature on signs must conform to the identity standards of the College outlined previously in this manual. However, *for sign use only*, the College signature, which normally has no wordspacing, will have tight wordspacing added. A campus designation is added as a second line, 2/3 the size of the wordmark, or the height of a lower case letter.



## Vehicle and Uniform Identification

Vehicle identification standards are designed to promote clear, immediate recognition of College-owned or leased automobiles, delivery trucks, service vans, pick-up trucks, and station wagons. *For vehicle use only*, the wordmark may be stacked vertically, as illustrated below, when the signature is used alone. When a department or program designation is added to the signature, the name should appear under the wordmark, and no more than 50 percent of the size and weight of the wordmark. No other logos are to be used with the College signature on a vehicle.

Where appropriate, the College identity is reflected on the uniforms of its personnel for the same reasons as previously mentioned – ease of recognition, visual continuity, and professional appearance. The identity standards of the College are applicable to all uniforms.



---

The Board of Governors of Pima County Community College District has affirmed that the College is an equal educational/employment opportunity institution.

The College has policies relative to nondiscrimination on the basis of race, religion, color, national origin, sex, age, disability, veteran and military status and sexual orientation.

For further information, please contact the Affirmative Action/ Equal Opportunity Office, District Office, 4905C E. Broadway Blvd., Tucson, AZ 85709-1310, (520) 206-4539 or at [www.pima.edu/dco-eeo-aa](http://www.pima.edu/dco-eeo-aa).

To request a reasonable accommodation, please call the AA/EEO office at (520) 206-4539. For the general public, please contact the PCC information line at (520) 206-4500 (TTY (520) 206-4530); for PCC students, contact the appropriate campus Disabled Student Resources Office.

---

Published by Pima County Community College District Media Production and Publications Department.

*This publication is also available online at [www.pima.edu.3](http://www.pima.edu.3)*