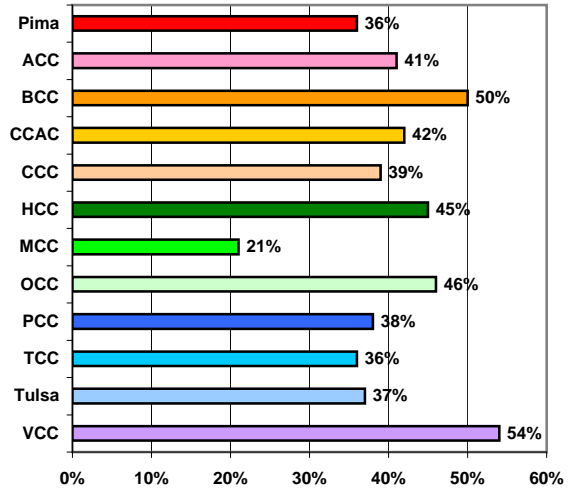
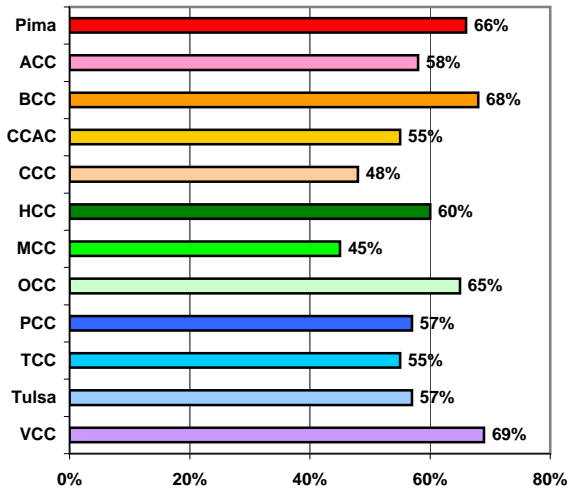


# Pima Community College Performance Indicators

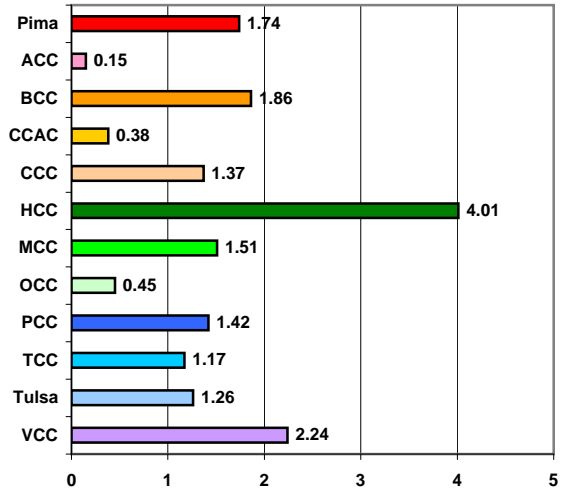
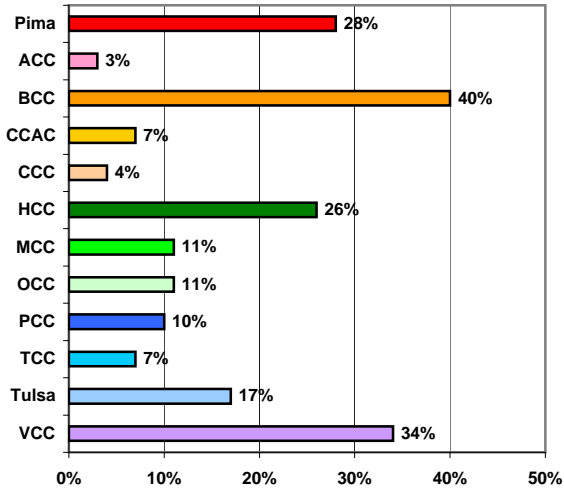
## Benchmarking Institutions

<b>PIMA</b>	Pima Community College	<b>MCC</b>	Macomb Community College
<b>ACC</b>	Austin Community College District	<b>OCC</b>	Oakland Community College
<b>BCC</b>	Brevard Community College	<b>PCC</b>	Portland Community College
<b>CCAC</b>	Community College of Allegheny County	<b>TCC</b>	Tarrant County Community College
<b>CCC</b>	Cuyahoga Community College District	<b>Tulsa</b>	Tulsa Community College
<b>HCC</b>	Hillsborough Community College	<b>VCC</b>	Valencia Community College

<b>% First-time<sup>a</sup>, FT<sup>b</sup> Student Retention</b>	<b>% First-time<sup>a</sup>, PT Student Retention</b>
---	---



<b>Graduation Rate<sup>c</sup></b>	<b>Affordability Index<sup>d</sup></b>
------------------------------------	--



<sup>a</sup> Degree/Certificate seeking, New to Higher Education (NTHE) Cohort

<sup>b</sup> Full-time student enrolled for 12 or more credits

<sup>c</sup> 150% of normal time, NTHE cohort

<sup>d</sup> College Affordability Index is the percentage change in the tuition and fees charged for a full-time undergraduate student between academic year 2005-2006 and academic year 2007-2008 divided by the percentage change in the Consumer Price Index-All Urban Consumers (Current Series) from July 2005 to July 2007.

Source: Pima Community College

Planning and Institutional Research (March 2008)

IPEDS Fall Enrollment Survey, Fall 2006 for Retention of Fall 2005 New to Higher Education Students, Graduate Rate Survey, Cohort of 2003